

CELL TYPE:	Primary Human Hepatic Stellate Cells	LOT NUMBER:	2019300
PRODUCT CODE:	NPC-AD-SC-P0		
STORAGE:	Cryopreserved in Vapor Phase Liquid Nitrogen (-135°C to -190°C)		

POST THAW RESULTS				QUALITY CONTROL RESULTS		
Average Viability	Average Viable Cells/Vial x 10 ⁶	Population Doubling	Average Cell Size	Mycoplasma	Culture Morphology	Phenotype in Culture (ICC)
87%	0.82	5.8 days	20.7 microns	Undetected	Figure 1	Figure 2

FIGURE 1. CULTURE MORPHOLOGY

Shown at passage 1

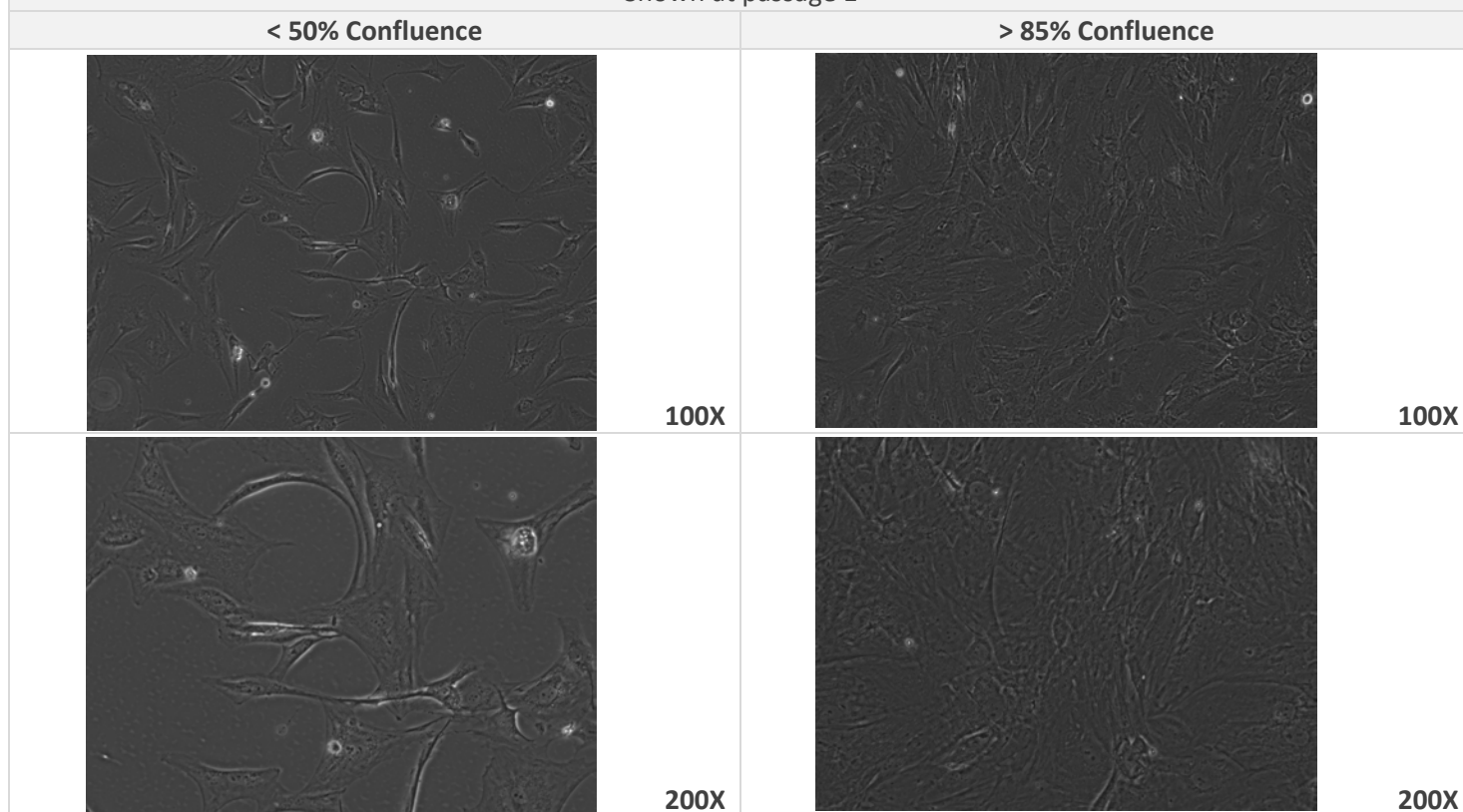
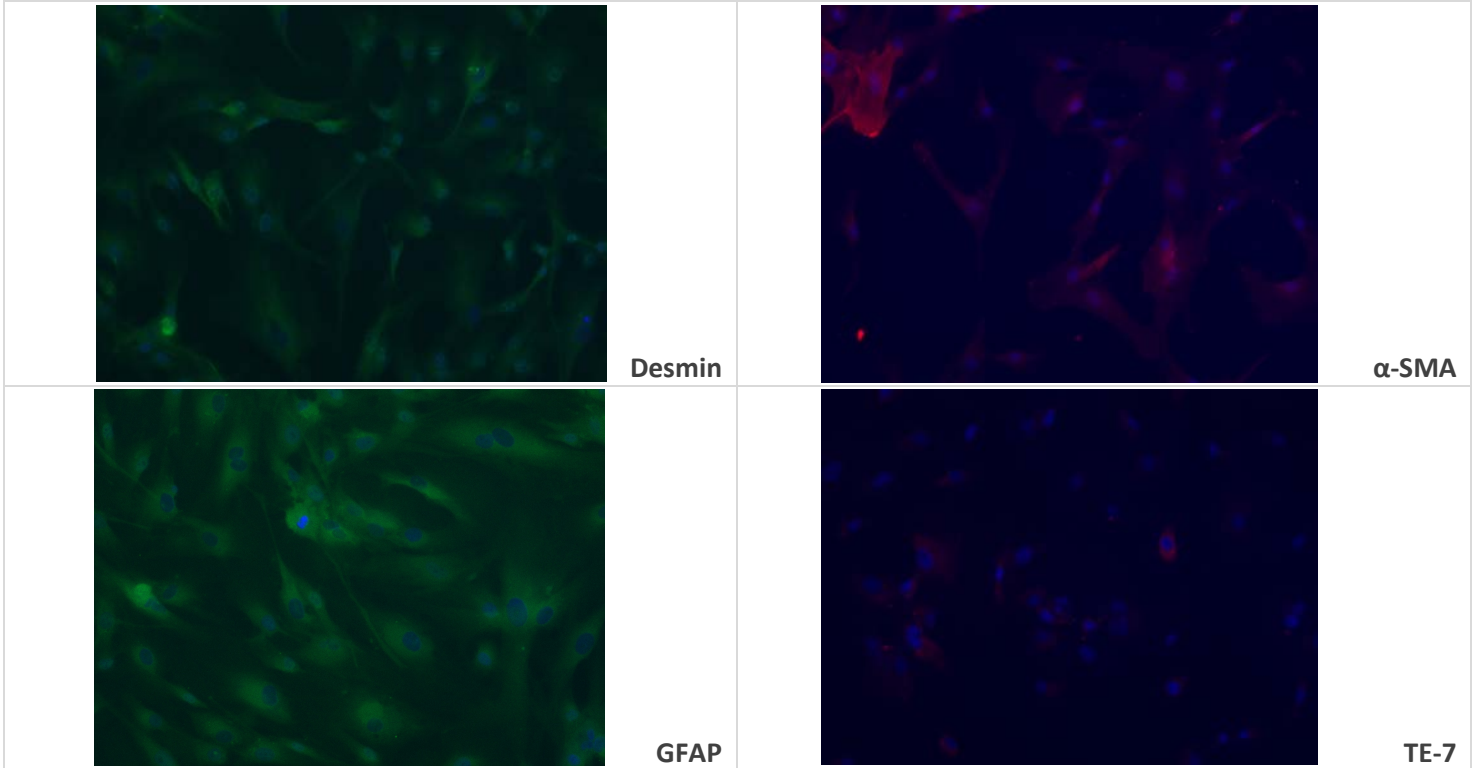


FIGURE 2. PHENOTYPE IN CULTURE

Characterized by ICC analysis, shown at passage 1 (200x)



Results above are determined by following LifeNet Health's Stellate Cell Instructions for Use.

Signature:  Date: 10/17/2020

Signature:  Date: 10/17/2020

Authorization was obtained from the donor or the donor's legal next of kin for use of the tissue and its derivatives for research purposes.
Caution: The user should treat all human cells as potential pathogens. Wear protective clothing and eyewear. Practice appropriate disposal techniques for potentially pathogenic or biohazardous materials. For research use only. Not intended for human or animal therapeutic or diagnostic use.